



**S&C SLATTER**  
SPORTS CONSTRUCTION SPECIALISTS



Sports Facilities since 1991



# Contents

Welcome 5

## Independent Schools

Eton College	6
Roedean School	9
Kingshott School	10
Farleigh School	13
Cheltenham College	14
Bryanston School	17
Benenden School	18
Queen Ethelburga's Collegiate	21
Wellington College	22
Hampton School	25
Dulwich College	26
Shrewsbury House School	28
Ratcliffe College	30

## Sports Hubs

Elmbridge Xcel Sports Hub	33
Hart Leisure Centre	34

## Clubs

Sutton United Football Club	37
Reading Hockey Club	38
Leatherhead Youth Football Club	41
Maidstone United Football Club	43
Harrogate Town AFC	45
Tamworth Football Club	46
Eastbourne Borough FC	48
QPR Academy	50
Everton FC	53

## Schools

St Bartholomew's School	54
South Bromsgrove High	56
Swanmore College	59
Royal Holloway University of London	61
University of Kent	62















# Welcome

S&C Slatter has a substantial heritage in the design, construction and maintenance of sports facilities and estate infrastructure. Our one stop service reach embraces all elements of project development and delivery for new build, refurbishment or replacement programmes.

Five specialist divisions – Sports Construction, Surfacing & Civils, Design & Planning, Sports Maintain and Smart Pitches - provide a group of focussed, customer-centric, in-house resources highly tuned to specific project works and specifications.

We enjoy strong relationships across a broad spectrum of sectors including sport, leisure, education and construction. Our collaborative approach is highly regarded and a key driver of our commitment to deliver optimum quality.

S&C Slatter is an FIH Certified Field Builder and ISA Gold Preferred Supplier and recognised, accredited and certified by a number of governing and advisory bodies. These encompass quality management, supply chain, procurement and risk management systems as well as sports and construction-specific performance standards.

I hope you enjoy reading more about our company.

*David Slatter*

Managing Director  
S&C Slatter Limited

# Eton College

Sand-dressed Artificial Turf Pitches for Hockey

Sand-dressed Artificial Turf Pitch for Training

Paving Grid Car Park

Tarmacadam Road and Pathways

Eton College commands a unique position within the Country's sporting heritage and therefore the appointment to build a major new development at Willowbrook was a prestigious commission for S&C Slatter.

Central to the new facilities are two 101.4m x 61m sand-dressed artificial turf hockey pitches supplemented by a 59m x 27m hockey training pitch. All are surfaced with FieldTurf Gold Elite artificial turf and designed to play to the FIH National Performance Standard.

The new build specification is an engineered macadam construction incorporating a lateral drainage system; overlaid by an in-situ bound rubber shock pad. The two main pitches are floodlit by 60no 2kw floods on 16no 15 metre columns providing 500 lux illuminance. Each pitch has 868 rigid panel weld mesh perimeter fencing and is furnished with a full complement of pitch sports equipment.

S&C Slatter has also created a 52-space barrier entry paving grid car park with tarmacadam access road which necessitated a section 278 connection to the adjacent highway. The car parking is linked to the sports pitches and new pavilion via tarmacadam and resin-bound gravel pathways featuring bollard lighting.

The project was managed and completed by the company's in-house design, construction and project management teams led by Pre-Construction Manager Ben O'Connor and Contracts Manager David Smith.

Client Eton College

Facility Sand-dressed Artificial Turf Pitches for Hockey. 12370m2.

Sand-dressed Artificial Turf Pitch for Training. 1593m2.

FIH National Performance Standard.

Paving Grid Car Park. 1270m2

Tarmacadam Roadway. 674m2

Tarmacadam & Resin-Bound Gravel pathways. 799m2

Floodlighting, Illuminated Bollards and Fencing systems.

Sports Pitch Equipment.

Maintenance Equipment.





“ We are delighted with the new sports pitches and car park constructed by S&C Slatter at Willowbrook. This is an important development for the College.”

**Ian Mellor**, Building & Facilities Director, Eton College





“Roedean are incredibly proud that Kate and Helen Richardson-Walsh, both Olympic Hockey Champions are the School’s Sports Ambassadors, and are delighted that the new facility will enable the pupils to aim for the heights that these two outstanding athletes have reached.”

**Richard Poffley**, Director of Finance and Administration, Roedean School





# Roedean School

Sand-dressed Artificial Turf Pitch for Hockey

Tarmacadam Tennis & Netball Courts

Natural Grass Pitch

Car Park & Roadway

Roedean School enjoys a wonderful cliff-top location within the South Downs National Park on the outskirts of Brighton. Given this setting and the proximity of a listed building, the development of new external sports facilities demanded great sensitivity in design and construction to minimise any visual impact on the local environment.

These considerations had of course to be balanced with the imperative of creating an outstanding and highly practical asset for the school, and meet the demands of the significant growth in pupil numbers.

S&C Slatter, working closely with the School and planning authorities, conceived and completed an innovative engineering solution with an extensive cut and fill operation and a series of retaining walls to create new construction footprints inset and modelled unobtrusively into the Sussex hillside.

The new FIH National Performance Standard certified hockey facility has a FieldTurf Hockey Gold Elite artificial turf playing surface whilst the refurbished tennis court complex is colour coated with a water-based polyurethane over tarmacadam.

Car parking provision has been greatly enhanced by the introduction of a formal 48-space tarmacadam car park and access road from which a network of pathways and transitions link all the site elements.

The whole contract process was delivered by the company's in-house Pre-Construction and Engineering teams with Contracts Manager Peter Fowler responsible for on-plan performance.

Client Roedean School

Facility Sand-dressed Artificial Turf Pitch for Hockey. 6388m<sup>2</sup>.

Tarmacadam Tennis & Netball Courts with polyurethane colour coating. 7210m<sup>2</sup>.

Natural Grass Pitch. 3157m<sup>2</sup>.

FIH National Performance Standard for Hockey.

Tarmacadam Car Park & Roadway 1200m<sup>2</sup>.

Tarmacadam Hard Standings & Pathways. 1900m<sup>2</sup>.

Floodlighting, Illuminated Bollards and Fencing systems.

Sports Pitch Equipment.

Maintenance Services & Equipment.





# Kingshott School

Sand-dressed Artificial Turf Pitch for Hockey

Tarmacadam Tennis & Netball Courts

Artificial Turf Cricket Practice Facility

Tarmacadam Car Parks & Roadway



Kingshott School has an ongoing commitment to provide the very best facilities for its children. The school has some four hundred pupils between the ages of 3 and 13, and prides itself on its ability to present an outstanding co-educational learning experience.

S&C Slatter was awarded a significant design & build sports facility & infrastructure contract featuring the provision of a floodlit FieldTurf sand-dressed artificial turf hockey pitch, triple lane artificial turf cricket practice nets and the refurbishment of a multi-court tennis and netball area.

These facilities are serviced by new tarmacadam car parks, access roadway, pedestrian pathways and hard standings constructed by the company's Surfacing & Civils division.

Peter Fowler, Contracts Manager, together with Dave Wills, Site Supervisor, led and managed delivery of this major new resource for the school.

Client Kingshott School

Facility Sand-dressed Artificial Turf Pitch for Hockey. 4935m<sup>2</sup>.

Colour-coated Tarmacadam Tennis & Netball Courts. 2340m<sup>2</sup>.

Triple-lane Artificial Turf Cricket Practice Facility.

Tarmacadam Car Parks and Roadway.

Tarmacadam Pedestrian Footpaths and Hard Standings.

FIH National Performance Standard.

ECB-approved Artificial Turf Cricket Pitch Systems.







“ At Kingshott School, we encourage every child to be ‘the best I can be’. It has been a pleasure to work with S&C Slatter during the installation of our magnificent all weather pitch and resurfacing of our hard courts. Their professionalism and expertise resonated completely with our ethos, as they have delivered sports facilities which are clearly, ‘the best they can be’. Thank you from everyone at Kingshott School.”

**Mark Seymour**, Headmaster, Kingshott School





“ The new all-weather pitch is a fantastic addition to Farleigh’s extensive facilities. We have a strong tradition of boys and girls gaining sports scholarships to senior schools and it is important that our pupils are able to play hockey on AstroTurf. The new pitch is part of a wider programme of capital investment, ensuring that Farleigh maintains its place as one of the top prep schools in the country.”

**Danny Boswell**, Director of Finance & Operations, Farleigh School



# Farleigh School

Sand-dressed Artificial Turf Pitch for Hockey and Tennis

Natural Grass Cricket Outfield

Floodlit Car Park

Farleigh is a leading co-educational prep school situated in 60 acres of magnificent parkland and landscaped woodlands in the Test Valley. The school environment has a real sense of achievement and momentum provided by the broad curriculum and commitment to academic, creative, cultural and sporting excellence.

S&C Slatter was selected to provide its specialist sports construction and civil engineering skills in building a new 90m x 60m fully equipped artificial turf pitch for hockey and tennis supported by a 2307m<sup>2</sup> floodlit car park, access road and pathways. The pitch system is a high quality 18mm FieldTurf Hockey Gold SD sand-dressed artificial turf over a 15mm in-situ bound shock pad.

The company also used surplus stripped materials from the cut and fill pitch construction to build a new natural turf cricket outfield for the school.



Client Farleigh School

Facility Sand-dressed Artificial Turf Pitch for Hockey and Tennis. 5400m<sup>2</sup>.

Floodlit Car Park. 2307m<sup>2</sup>.

Natural Turf Cricket Outfield.

FIH National Performance Standard for Hockey.

Inlaid line marking for 1no full size hockey pitch and 2no cross pitches.

Engineered sub-base construction with integral drainage system.

3m weldmesh perimeter fencing with 1.2 metre spectator fence, spectator area, team shelters, detox area and pitch equipment.

Access pathways and road.

Natural grass cricket outfield using surplus material from pitch construction.

**FARLEIGH**  
SCHOOL







# Cheltenham College

- Sand-dressed Artificial Turf Pitches for Hockey
- Tarmacadam Multi-use Games Area
- Artificial Turf Cricket Practice Lanes

S&C Slatter was engaged by Cheltenham College to deliver a major refurbishment of their outdoor sports facilities featuring the re-surfacing of two full size artificial turf hockey pitches and a 58m x 34m multi-use games area principally used for tennis and netball. A new full length junior twin lane cricket practice area was also provided with artificial turf playing systems.

The two existing hockey pitches were refurbished and upgraded with new 18mm sand-dressed artificial turf which in conjunction with in-situ bound rubber shock pads, produce exceptional ball performance and player comfort. For the 'Cotswold' pitch, a two tone colour layout of green and blue was selected with the College crest inset into the artificial turf.

With the multi-use games area a new sports grade tarmacadam top layer was laid over the existing surface and coated with a two tone green colour textured acrylic resin to complete the resurfacing.



Client Cheltenham College

Facility Sand-dressed Artificial Turf Pitches for Hockey. 6163m<sup>2</sup> and 5941m<sup>2</sup>.

Tarmacadam Multi-use Games Area. 1972m<sup>2</sup>.

Twin Lane Junior Artificial Turf Cricket Practice Facility. 132m<sup>2</sup>.

Uplift, removal and disposal of existing surfaces and shock pads.

Preparation and refurbishment of sub-bases prior to re-surfacing.

Provision and installation of pitch sports equipment and perimeter fencing systems.

Upgrade of floodlights to 350lux on one hockey pitch.







“ S&C Slatter certainly delivered what we wanted; working closely together we were able to create two high performance hockey pitches. At each stage of the process my wishes were taken on-board and I found it reassuring how I could at any time have a conversation with one of the team to discuss any part of the project. We now have at Cheltenham two outstanding surfaces that meet the requirements of our hockey programme.”

**Gwyn Williams**, Head of Hockey, Cheltenham College





“ Our new hockey pitch enables our pupils to play a fast and expansive game. The high-quality appearance of the pitch has added to the motivation, pride and desire of our teams to succeed on it. Thank you, S&C Slatter.”

**Alex Fermor-Dunman**, Director of Sport, Bryanston School





# Bryanston School

Sand-dressed Artificial Turf Pitch for Hockey

Girls' and Boys' hockey is strong at Bryanston School with some twenty three teams competing in Regional and National competitions, highlighting the popularity and importance of hockey within the school. Individual girls and their respective school teams have delivered outstanding results in recent years, with sides often positioned in the top two in the county.

The brief was to replace the artificial grass surface on the principal hockey pitch and introduce a new system which would ensure compliance with the FIH National Performance Standard. To deliver this objective, S&C Slatter installed an in-situ bound rubber shock pad onto the tarmacadam engineered sub-base, and then laid a high performance 18mm sand-dressed artificial turf complete with inlaid line markings.

To reflect and compliment the other branding elements the school has introduced to the pitch equipment and perimeter, the Bryanston School crest was reproduced in artificial turf and inset into the playing surface.



Client Bryanston School

Facility Sand-dressed Artificial Turf Pitch for Hockey. 5880m<sup>2</sup>.

FIH National Performance Standard.

Uplift, removal and disposal of existing surface and shock pad.

Preparation and verification of the sub-base prior to re-surfacing.

Inlaid line markings for one full side pitch and D's for two cross pitches.

Colour green artificial turf playing area with contrasting surrounds in blue.





# Benenden School

## Sand-dressed Artificial Turf Pitch for Hockey and Lacrosse

Benenden is acknowledged as an exceptional school for girls occupying 240 acres of beautiful parkland in the Kent countryside. The girls benefit from outstanding facilities and a school community which aspires for excellence.

S&C Slatter was commissioned to build a 108m x 63m new artificial turf hockey and lacrosse pitch complete with all necessary sports infrastructure. The construction process featured the provision of a temporary haul road and an extensive cut and fill operation with the installation of a 1.75m pre-cast concrete retaining wall. Surplus excavated material was used to create a landscaped bund within the grounds.

The playing system is the FieldTurf Gold SD sand-dressed artificial turf with an in-situ bound rubber shockpad and engineered sub-base structure. The Benenden logo is inset into the artificial grass as part of the school branding which also takes in the team shelters and scoreboard.

The completed pitch has been independently certified as meeting the International Hockey Federation (FIH) National Performance Standard.

Client Benenden School

Facility Sand-dressed Artificial Turf Pitch for Hockey and Lacrosse. 6804m<sup>2</sup>.

FIH National Performance Standard for Hockey.

Colour green artificial turf playing area with inset school logo and contrasting surrounds in blue.

Complete with LED floodlighting, perimeter fencing, team shelters, scoreboard and pitch sports equipment.







“The All-Weather Pitch and Pavilion have transformed our sporting offer here at Benenden. This wonderful new facility means we can practise Lacrosse and Hockey whatever the weather and time of day, greatly enhancing the standard of performance we can achieve. The Pavilion has led to a huge increase in the number of spectators at home matches, which is an important element of our close-knit school community.”

**Louise Hall**, Director of Sport, Fitness and Wellbeing, Benenden School



“The pitches installed by S&C Slatter are performing brilliantly. The service and installation was similarly excellent and I would gladly recommend the company.”  
**Amy Martin**, Chief Executive Officer, Thorpe Underwood Estate





# Queen Ethelburga's Collegiate

3G Artificial Turf Pitches for Rugby and Football

Water-based Artificial Turf Pitch for Hockey

Artificial Turf Work Out Area

Queen Ethelburga's Collegiate Foundation comprises four schools and a kindergarten, each with its unique qualities, but all sharing a common purpose of providing students with a first class education and the opportunity to work towards higher education and a successful career.

The Thorpe Underwood Estate selected S&C Slatter to work in close partnership on the development of the College's sports pitch facilities. In this extensive new build project, nearly 38000m<sup>2</sup> of artificial turf has been installed in providing five new sports pitches and a work out area.

A high quality 60mm 3G artificial turf provides a total of four rugby and football pitches for senior and junior players, while an 18mm Water-based artificial turf features on the new hockey pitch which meets the FIH Global standard.



Client Queen Ethelburga's Collegiate

Facility 3no 3G Artificial Turf Pitches for Rugby and Football. 25728m<sup>2</sup>.

3G Artificial Turf Pitch for Rugby. 4240m<sup>2</sup>.

Water-based Artificial Turf Pitch for Hockey. 6388m<sup>2</sup>.

Artificial Turf Work Out Area. 1600m<sup>2</sup>.

Rugby and Football Artificial Turf Pitches certified to FIFA 1 Star and World Rugby Regulation 22 Performance Standards.

Hockey Artificial Turf Pitch certified to FIH Global Performance Standard.

Complete with in-laid lines and pitch equipment.





# Wellington College

## Sand-dressed Artificial Turf Pitch for Hockey and Tennis

Wellington College has a well established reputation for sporting excellence and wished to develop a new hockey and tennis facility which enhanced both the player and spectator experience.

S&C Slatter was chosen to work with the College in designing the refurbishment, extension and upgrading of a 20 year old sand-filled artificial turf facility, in order to deliver International Hockey Federation (FIH) National Performance Standard at all times, and FIH Global Performance Standard when wet.

This required a re-construction of the existing pitch foundation, creating a new engineered macadam sub-base overlaid with an in-situ bound SBR shockpad. A high quality sand-dressed texturised monofilament artificial turf was selected as the optimum playing surface complete with the College logo manufactured in the same artificial turf material and inset into the pitch.

Client Wellington College

Facility Sand-dressed Artificial Turf Pitch for Hockey and Tennis. 6344m<sup>2</sup>.

FIH National Standard Performance at all times, and FIH Global Standard when wet. Recreational tennis.

Re-modelling of sub-base and drainage, upgraded perimeter fencing system, new floodlights, enhanced spectator facilities and access routes.



WELLINGTON  
COLLEGE







“ I must commend you for delivering the scheme in front of programme, on budget with no extras or disputes and to an outstanding quality along with no H&S events.”

**Gerald M Burbidge**, FCIQB CMIOSH Works and Estate Bursar, Wellington College



“ We were exceptionally happy with the service provided by S&C Slatter and have no problem recommending them to others.”

**Mike King**, Bursar and Clerk to the Governors, Hampton School







# Hampton School

3G Artificial Turf Pitch, Full Size Rugby and Football Field plus Training Area

A collaborative working partnership was created between S&C Slatter and Hampton School in order to deliver an exceptional sports and recreation asset for the client.

An extensive earthworks operation, undertaken by our in-house civil engineering team, was necessary to create a plateau on which the new facility could be sited. The artificial turf pitch specification features a number of innovative designs and functions intended to enhance the user experience and the safe operation of the sports field.

For example, 3G turf football and rugby pitch benefits from a fully automatic irrigation system with in-ground sprinkler heads to assist the grounds staff in managing playing characteristics whatever the weather. This links into the site's existing irrigation system, maximising the control and water-use efficiency across the site.

The project delivered by S&C Slatter included substantial and site-wide sports facility upgrading and enhancements, with the construction of two new cricket squares and new natural turf sports pitches. Furthermore, extensive refurbishment and resurfacing of the ageing polymeric athletics facilities was completed to the high standards expected of this prestigious site.

Client Hampton School

Facility 3G Artificial Turf Pitch for Rugby and Football Matchplay and Training, plus Natural Turf Pitches and Athletics Facilities. 12500m<sup>2</sup>.

World Rugby Regulation 22 and FIFA 2-Star Performance.

Perimeter fencing system, artificial grass pitch surrounds and landscaping, re-construction and re-location of 2 no. cricket squares and natural grass pitches.



HAMPTON SCHOOL



# Dulwich College

## Sand-dressed Artificial Turf Pitch for Hockey

The refurbishment and upgrading of an existing facility and its environs to a high specification with the new artificial turf pitch being designed to deliver International Hockey Federation (FIH) National Performance Standard.

A significant degree of re-construction was required, converting the pitch sub-base to an engineered macadam structure incorporating the provision of root protection barriers along one side. The selected playing surface is a state of the art sand-dressed texturised monofilament artificial turf, installed over a new in-situ bound rubber performance layer. Permanent line markings for hockey are inlaid into the surface.

The perimeter fence line has been replaced by 3m weld mesh panels to impart greater durability with additional 2m netting to extend ball stop capability. New pitch access pathways, team shelter recess, storage and access decontamination areas complete the remodelled sporting facility.

Client Dulwich College

Facility Sand-dressed Artificial Turf Pitch for Hockey. 5962m<sup>2</sup>.

FIH National Performance Standard.

Significant civil engineering remodelling, upgraded perimeter fencing system, enhanced access routes and ancillary facilities.



**DULWICH COLLEGE**  
FOUNDED 1619







“ The new Hockey pitch is looking fantastic. Thanks to the S&C Slatter Team for all their hard work.”

Phil Greenaway, Director of Sport, Dulwich College



# Shrewsbury House School

## 3G Artificial Turf Pitch for Rugby and Football Matchplay and Training

S&C Slatter was engaged to undertake the design, planning and construction of the entire facility; investing the time, energy and commitment to work with the school and identify solutions which fully met agreed performance requirements.

The project featured the construction of a new World Rugby and FIFA certified 3G artificial turf pitch system which performs incredibly well for both school and club standard play. At the time of completion this was the first facility of its kind to be opened at an English preparatory school.

An important addition to the scheme was the upgrading of existing artificial cricket nets, reconstructed using Notts Sport ECB-approved systems to deliver high whole-life performance.

An adjacent athletics long jump facility was also refurbished to complete a holistic sporting facility.

Client Shrewsbury House School

Facility 3G Artificial Turf Pitch for Rugby and Football.

World Rugby Regulation 22 and FIFA 2-Star Performance.

Extensive civil engineering works, perimeter fencing system, landscaping, refurbishment of artificial cricket nets and athletics long jump area.







“ The opportunities a facility like this can offer the school at so many levels are virtually immeasurable.”  
**Kevin Doble**, Headmaster, Shrewsbury House School



# Ratcliffe College

Polymeric Track and Long Jump for Athletics

Sand-dressed Artificial Turf Pitch for Hockey

Tarmacadam Multi-Use Game Area

Ratcliffe College was founded by the Institute of Charity in 1847 and has a spirit of educational innovation which it traces back to founder Antonio Rosmini. Pupils are encouraged to participate in sport and traditional team games are considered to be a vital part of life and each pupil's personal development.

Working in conjunction with Notts Sport, S&C Slatter has constructed a range of new sports facilities for the College featuring three different types of playing surface.

The existing athletics track and long jump area have been totally refurbished with a new 15mm polymeric athletics system installed over an engineered sub-base. Meanwhile a new full size FIH National Performance Standard artificial turf hockey pitch has also been built. The pitch uses a NottsGrass SD20 sand-dressed artificial turf playing surface and shock pad and is supplemented by a pitch divider system, floodlighting, perimeter fencing and access paths.

A new build 40.6m x 36.6m tarmacadam multi-use games area (MUGA) is now sited nearby and line marked for both netball and tennis. Rigid panel weld mesh fencing has been provided to the perimeter of the area.

Client Ratcliffe College

Facility Polymeric Track and Long Jump for Athletics. 2571m<sup>2</sup>.

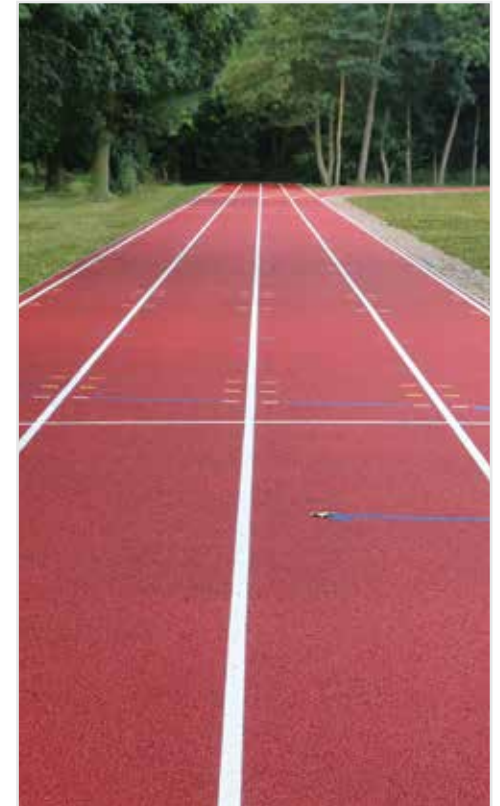
Sand-dressed Artificial Turf Pitch for Hockey. 6472m<sup>2</sup>.

Tarmacadam Multi-use Games Area. 1485m<sup>2</sup>.

Hockey Pitch to FIH National Performance Standard.

Fully engineered sub-base construction with integral lateral drainage system.

Complete with floodlighting, perimeter fencing, pitch sports equipment and access paths.











“ S&C Slatter co-ordinated and worked well with both the Council’s asset management team and the Xcel Sports Hub’s principle contractor. They worked hard to fully address our requirements and were proactive throughout the project. The Council and the four resident clubs are all very proud of the facilities created at the Xcel Sports Hub and we look forward to enjoying them for many years to come.”

**Simon Morris**, Building Surveyor, Elmbridge Borough Council



# Elmbridge Xcel Sports Hub

3G Artificial Turf Stadium Pitch for Football

3G Artificial Turf Practice Pitch for Football

Natural Grass Football Pitch

Polymeric Athletics Track with Natural Grass Infield

Car Park

As Category A Supply Chain Partner to the principle contractor, Willmott Dixon, we are delighted to have made a significant contribution to the exciting new Elmbridge Xcel Community Sports Hub which is being seen as one of Surrey's most important community assets.

The new Sports Hub provides a shared home ground for Walton Casuals Football Club, Walton & Hersham Football Club and Walton Athletics Club, all of whom will be playing their sport on an artificial surfacing system constructed by S&C Slatter. Local clubs, sports teams and schools will also be taking full advantage of the new pitches and track.

The entire ground and facilities are built in accordance with Football Association National Ground Grading Category C with the 3G football turf stadium and training pitches both designed to play to FIFA Quality Performance Standard. There is also a 7420m<sup>2</sup> natural grass training pitch and a 9000m<sup>2</sup> UK Athletics level 2 competition grade (County and Regional) athletics facility centred on an 8 lane polymeric running track and a full range of field athletics.

Led by Pre-Construction Manager Ben O'Connor and Contracts Manager Peter Fowler, the S&C Slatter project team has delivered a facility of exceptional quality.



Client Elmbridge Xcel Sports Hub

Facility 3G Artificial Turf Stadium Pitch for Football. 7420m<sup>2</sup>.

3G Artificial Turf Practice Pitch for Football. 7420m<sup>2</sup>.

FIFA Quality Performance Standard.

Natural Grass Training Pitch for Football.

Stadium to FA National Ground Grading Category C.

8 Lane Polymeric Athletics Track with Field Athletics. 9000m<sup>2</sup>.

UK Athletics Level 2 Competition Grade.

242-space macadam Stadium Car Park and Access Road.

Floodlighting and fencing systems including weld mesh rigid panel, spectator, acoustic and post & rail.

Footpaths, hardstandings and landscaped natural grass amenity areas.





# Hart Leisure Centre

3G Artificial Turf Pitch for Football

3G Artificial Turf Pitches for 5-a-side Football

Natural Grass Pitches

Floodlighting and Perimeter Fencing systems

S&C Slatter was selected by principal contractor Willmott Dixon as specialist sports construction partner for a key element of the £23 million re-development of the Hart Leisure Centre in Fleet, Hampshire. The new centre is managed by leading leisure operator Everyone Active.

Over 10000 square metres of artificial turf have been installed by S&C Slatter for a full size 3G football turf pitch to FIFA Quality Performance Standard and four 37m x 18.5m 5-a-side 3G football turf pitches. All feature surfacing systems from FieldTurf the World's leading producer of artificial sports grass and the company's manufacturing partner. The relevant civil engineering works were all completed by S&C Slatter using its in-house construction expertise and resources.

The provision of floodlighting and rebound quality rigid panel weld mesh fencing to the perimeter of the artificial turf pitches was also part of the contract, as was the creation of two natural grass mini-pitches.

Toby Spearing was Site Foreman for S&C Slatter on what is a highly impressive mixed facility sports hub adjacent to the new Edenbrook Country Park and housing development.

Client Hart Leisure Centre

Facility 3G Artificial Turf Pitch for Football. 7844m<sup>2</sup>.

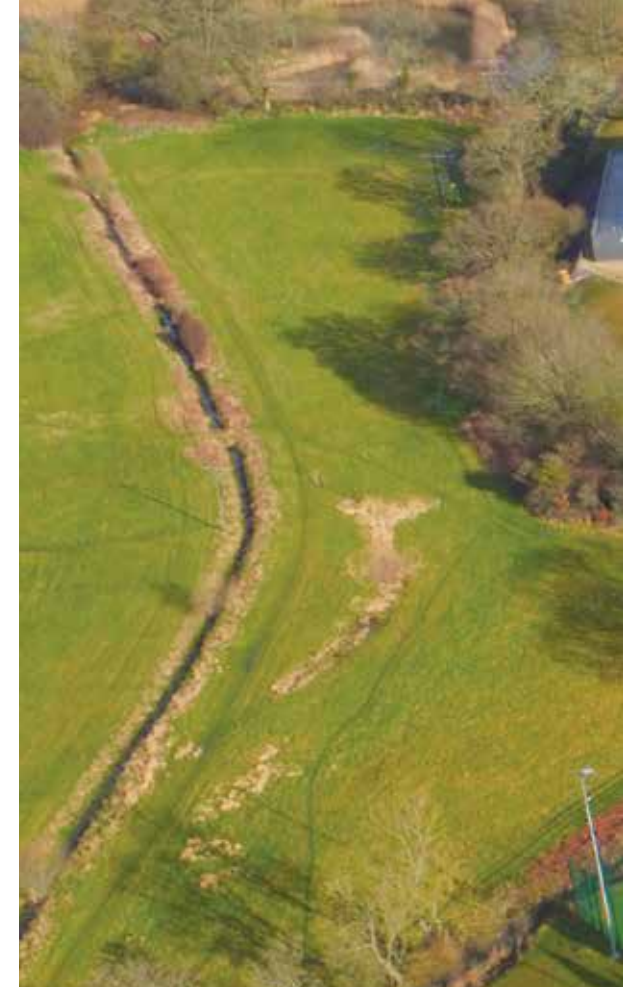
3G Artificial Turf Pitches for 5-a-side Football. 2738m<sup>2</sup>.

Natural Grass Pitches. 5504m<sup>2</sup>

Artificial Turf Pitch to FIFA Quality Performance Standard.

Floodlighting & perimeter fencing systems.

Sports equipment.







“ S&C Slatter in partnership with Willmott Dixon worked seamlessly and collaboratively, on time and on budget, to deliver the vision from design concept to finished product on site. We and our residents are very happy with the end product.

**Patricia Hughes**, Joint Chief Executive, Hart District Council





“ Fantastic company to work with. I've got to say all their team went the extra mile to get the pitch ready for us. I can't speak too highly of them.”

**Paul Doswell**, Director, Sutton United Football Club



# Sutton United Football Club

## 3G Artificial Turf Pitch for Football

Formed in 1898 by the amalgamation of two leading junior sides, Sutton United has been playing at the Borough Ground continuously since 1919, and is well established in the National League.

The new 3G football turf system, which has been designed and installed by S&C Slatter, features state-of-the-art FieldTurf Vertex 3G football turf installed over a 25mm E-Layer performance base. The eight week fast-track works programme involved significant earthworks and sub-base construction incorporating piped lateral drainage. A contrasting artificial grass run off around the perimeter of the playing surface reduces maintenance and upkeep still further while adding to the overall impressive appearance of the facility.

The FIFA 2-star certified 3G football turf pitch consistently delivers an excellent standard of play performance and player comfort, regardless of the weather. The club is equally pleased with the opportunity to hire the facility out to local clubs and organisations, generating an additional income stream.

Client Sutton United Football Club

Facility 3G Artificial Turf Pitch for Football.  
7158m<sup>2</sup>.

Artificial Grass Pitch Surround.  
1990m<sup>2</sup>.

FIFA 2-Star Performance Standard.

New build sub-base construction complete with lateral drainage system, mini tractor and equipment for maintaining the pitch.





# Reading Hockey Club

## Water-based Artificial Turf Pitch for Hockey

Reading Hockey Club is one of Europe's leading and most successful hockey clubs, and needed their existing artificial pitch to be re-surfaced with a system which would display and uphold the highest levels of field hockey play.

A detailed survey and assessment of the sub-base was undertaken to ensure its tolerances continued to comply with the requirements of the International Hockey Federation (FIH) Global Performance Standard.

An in-situ bound SBR shockpad was then installed over the engineered base and surfaced with the premium and innovative Hockey Gold WB artificial turf system. This features a hockey-specific fibre shape and texture which is designed to reproduce optimum ball performance and comfortable surface/player interaction.

The new hockey pitch has received wide recognition and acclaim.

Client Reading Hockey Club

Facility Water based Artificial Turf Hockey Pitch. 6388m<sup>2</sup>.

FIH Global Standard.

Incorporating in-situ bound SBR shockpad in addition to new Hockey Gold WB artificial turf system.

Reading Hockey Club 







“ We quickly formed a good working partnership with S&C Slatter. They delivered professionalism, expertise and commitment.”

**Neil Boddington**, Consultant to Reading Hockey Club







# Leatherhead Youth Football Club

## 3G Artificial Turf Pitch for Football

As an FA Charter Standard Club, Leatherhead Youth Football Club has an ethos to promote football to children from 4 to 18, with a foundation of excellent coaching and facilities. Their newly remodelled ground at River Lane certainly supports that ideal and is an outstanding example of a truly high quality community football stadium. It was supported by funding from The Football Foundation.

S&C Slatter was commissioned to construct a 106m x 70m 3G football turf pitch, certified to deliver FIFA 1 Star performance, together with spectator and car parking facilities. The new build project also featured the provision of floodlighting, fencing and access pathways.

FieldTurf Prestige XM6 50mm 3G football turf was selected as the playing surface, installed over an in-situ bound rubber crumb shockpad and onto an engineered macadam sub-base structure with lateral piped drainage system.

The company additionally supplied a range of ancillary items including team shelters, pitch equipment, signage and maintenance machinery.

Client Leatherhead Youth Football Club

Facility 3G Artificial Turf Pitch for Football.  
7420m<sup>2</sup>.

FIFA 1-Star Performance Standard.

New build engineered sub-base construction complete with lateral piped drainage system.

Perimeter fencing, floodlighting, paved spectator areas and pathways.

Two sixty seat modular grandstands.

Macadam stadium car parking and access roads.







“ We found S&C Slatter to be most professional and helpful throughout the process, from the moment we approached them through to the period of installation. It was like having a dedicated, specialist in-house team.”

**Oliver Ash, Co-owner, Maidstone United**



# Maidstone United Football Club

## 3G Artificial Turf Pitch for Football

National League Maidstone United was the first English football club to build a new stadium with a 3G football turf pitch. Their objectives in doing so were to eliminate match postponements, create a new revenue stream through external pitch hire, and to be able to establish the stadium as a hub for all the club's youth and community teams.

The playing system is the exceptional FieldTurf Vertex 3G artificial turf with an in-situ bound E-layer performance base. Complete with in-laid lines, the pitch delivers certified FIFA Quality Pro performance standard.

As well as providing a first-class pitch for Maidstone's Vanarama National League programme it is now a valuable asset for this highly progressive club and the wider community. It earned very favourable media reviews when featured several times on sports TV earlier in the 2016/17 season.



Client: Maidstone United Football Club

Facility: 3G Artificial Turf Pitch for Football.  
7420m<sup>2</sup>.

FIFA Quality Pro Performance Standard.

New build engineered sub-base construction with lateral drainage system.

Complete with in-laid lines, pitch and maintenance equipment.







“ The pitch looks and plays remarkably well, so much so that all the teams that have played on the pitch to date have been really impressed.”

**Irving Weaver, Chairman, Harrogate Town AFC**



# Harrogate Town AFC

## 3G Artificial Turf Pitch for Football

The CNG Stadium has been home to Harrogate Town AFC since the club's formation in 1914 and has been developed over the years to now provide the excellent range of facilities one sees today. A recent key part of their ambitious plans for the future has been the installation of a World-class 3G pitch by S&C Slatter.

Featuring a high quality FieldTurf Vertex 3G football turf, the FIFA 2-star certified pitch enables the club to play a much bigger part in the local community working in conjunction with partner clubs and West Riding FA.

The 3G pitch has an in-situ bound E-layer and 'Dynamic' sub-base construction incorporating lateral piped drainage and an automatic irrigation system.

S&C Slatter also completed works to the perimeter spectator fencing, pitch surrounds and hard standing areas as part of their contract.

Client: Harrogate Town AFC

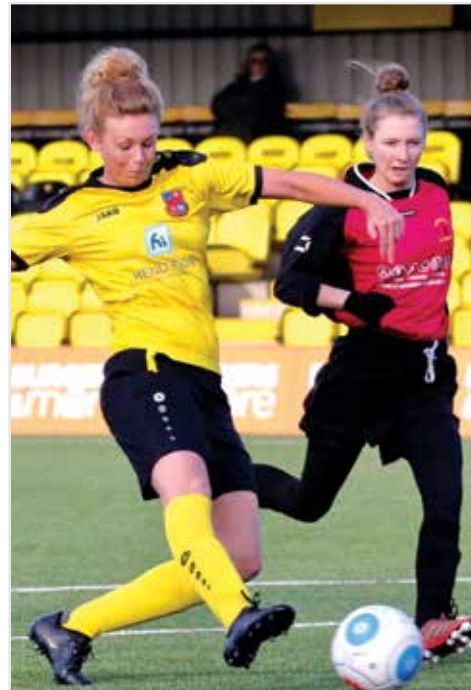
Facility: 3G Artificial Turf Pitch for Football.  
7931m<sup>2</sup>.

FIFA 2-Star Performance Standard.

New build dynamic sub-base construction with lateral drainage and automatic irrigation system.

Complete with in-laid line markings, pitch and maintenance equipment.

Fencing, hardstanding and pitch surround works.





# Tamworth Football Club

## 3G Artificial Turf Pitch for Football

Tamworth play in the National League North and have always seen the conversion to a 3G football turf stadium pitch as a key development of The Lamb Ground and one which would help financially sustain the club.

By being able to host significantly more football on the new pitch Tamworth can now have their academy playing matches at the stadium as well as advancing further engagement with the local football community. Aston Villa Ladies now play their first team and development team home games on the new 3G facility.

The FIFA 2-Star Performance Standard 3G pitch features a FieldTurf Vertex RGF 3G football turf. FieldTurf is a FIFA Preferred Producer and manufacturing partner to S&C Slatter. An in-situ bound e-layer performance base is installed under the artificial grass and laid over a dynamic engineered sub-base.

The pitch design and construction works had to incorporate reducing the existing pitch slope and taking account of the slightly unusual ground logistics.

Client: Tamworth FC

Facility: 3G Artificial Turf Pitch for Football.  
7721m<sup>2</sup>.

FIFA 2-Star Performance Standard.

New build dynamic sub-base construction with lateral drainage system.

Complete with in-laid line markings, pitch and maintenance equipment.

Annual specialist after care contract.





“ Right from the very beginning of the project we found the S&C Slatter staff good to deal with and they were very pro-active in getting to grips with our slightly unusual stadium and our specific requirements. The whole process went very smoothly and we would recommend the company from top to bottom as very efficient with a very good end product.”

**Bob Andrews, Chairman, Tamworth FC**





# Eastbourne Borough FC

## 3G Artificial Turf Pitch for Football

Work to convert the natural grass pitch at Eastbourne Borough's Priory Lane stadium to 3G football turf started early in May 2016 and was completed by mid-July ready for the club's new season in the National League South.

The FIFA 2-Star Performance Standard artificial pitch has a premium 42mm Vertex RGF 3G football turf manufactured by FieldTurf. Underneath the surface is an in-situ bound e-layer performance base installed over a fully engineered sub-base. In addition to the construction works and surfacing installation, S&C Slatter provided all the pitch sports equipment and pitch maintenance machinery.

The new pitch facility has enabled Eastbourne Borough to expand its already successful academy and development centre programmes and secure a long term agreement with national 5 and 6 a side league operator Soccersixes.



Platforms.com FRP FRP Advisory



Client: Eastbourne Borough FC

Facility 3G Artificial Turf Pitch for Football.  
8251m<sup>2</sup>.

FIFA 2-Star Performance Standard.

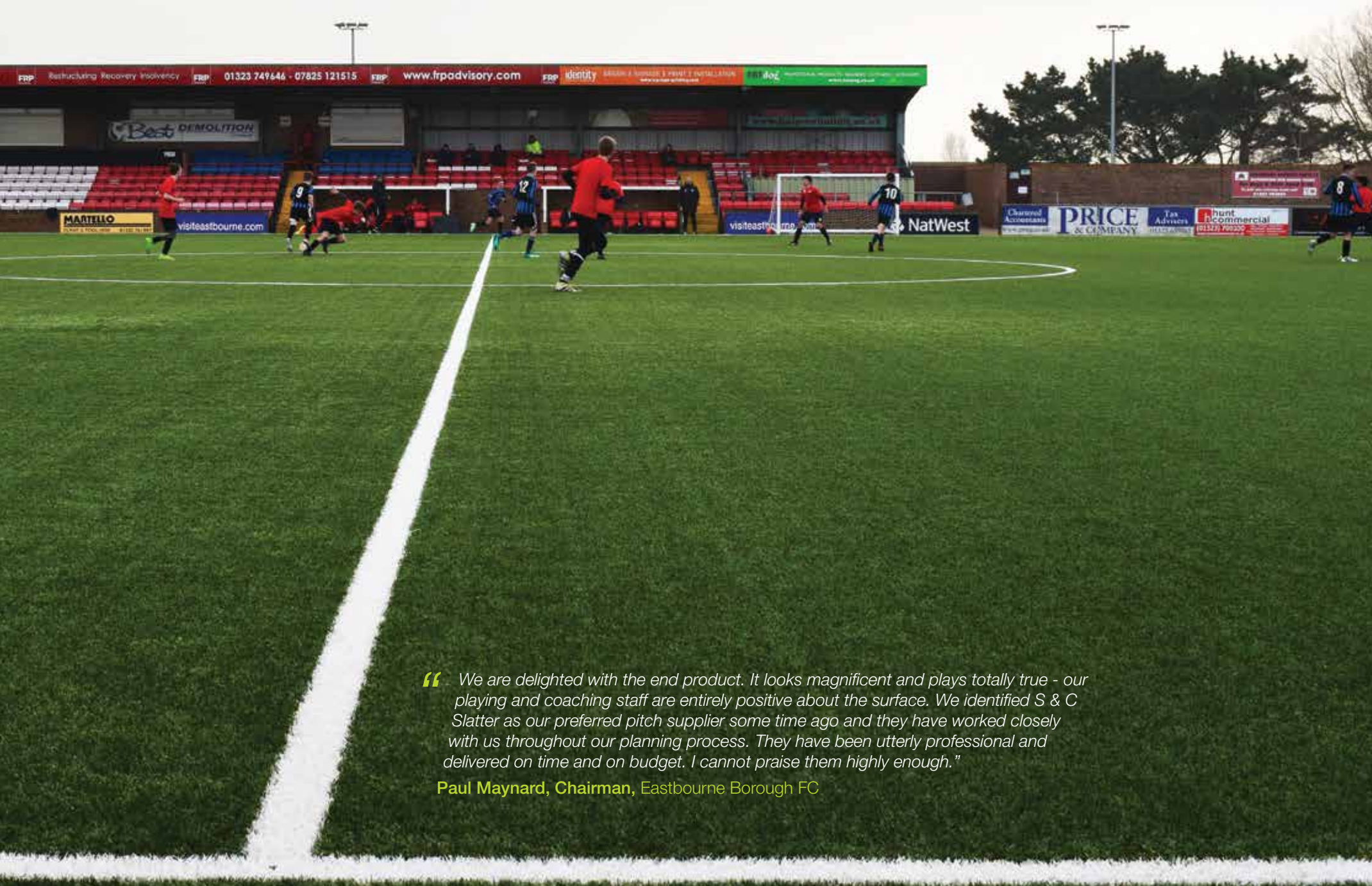
New build engineered sub-base construction with lateral drainage system.

Complete with in-laid line markings, pitch and maintenance equipment.

Annual specialist after care contract.







*“ We are delighted with the end product. It looks magnificent and plays totally true - our playing and coaching staff are entirely positive about the surface. We identified S & C Slatter as our preferred pitch supplier some time ago and they have worked closely with us throughout our planning process. They have been utterly professional and delivered on time and on budget. I cannot praise them highly enough.”*

**Paul Maynard, Chairman, Eastbourne Borough FC**



# QPR Academy

## 3G Artificial Turf Pitch for Football and Rugby

The Cranford SuperDome, is an impressive joint project between Queens Park Rangers Football Club and Cranford Community College, creating the largest indoor sports space in Hounslow. This excellent new facility will be used by the club's Academy players as well as students from the College, other schools in the area, and organisations in the wider community.

The indoor pitch covers 95.5m x 58.9m and features a 60mm 3G football turf artificial surface installed over an in-situ bound rubber shockpad. This system delivers a heavy duty performance in accordance with FIFA 1 and 2 Star and World Rugby Regulation 22 Performance Standards. This characteristic is important as it means the facility can also host rugby, which is a particular benefit as the sport is being developed within the College.

Inlaid line markings are installed for one full size pitch and three cross pitches.

Client Queens Park Rangers Football Club

Facility 3G Artificial Turf Pitch for Football and Rugby. 5625m<sup>2</sup>.

FIFA 1 and 2 Star and World Rugby Regulation 22 Performance Standards.

High performance 3G artificial turf for football and rugby with in-situ bound rubber shock pad.

Inlaid line markings for one full side pitch and three cross pitches.







“ *This really is impressive and will allow us to hone the talents and skills of our young players in a state-of-the-art pitch facility.*

**Les Ferdinand**, Director of Football, Queens Park Rangers Football Club







# Everton FC

## 3G Artificial Turf Pitches for Football

Everton has become the latest high-profile football club to enjoy the benefits of new football turf facilities provided by our Slatter Sports Construction Team. A full-size outdoor pitch and smaller indoor one at the club's renowned USM Finch Farm Training Complex have been refurbished and upgraded with new FieldTurf CORE 42-17 football turf playing surfaces.

Prior to introducing the new systems, the company's refurbishment technicians had to release, uplift and remove from site both the existing artificial grass surfaces and shock pads without causing disruption of the overall pitch structures.

Having completed the removal process and preparation of the sub-base formations, a new in situ-bound rubber shock pad was machine-laid to fine tolerances over each pitch footprint.

Installed over the new shock pad systems is FieldTurf CORE 42-17 football turf which represents a genuinely revolutionary development in artificial grass technology. The fibre has a hardened centre for exceptional resilience and durability but a soft outer layer for optimum player comfort and interaction. This combination has prompted many to comment that CORE is the most exciting innovation we've seen for many years.



Client: Everton Football Club

Facility: 3G Artificial Turf Pitch for Football.  
6760m<sup>2</sup>.

FIFA Quality Performance Standard.

3G Artificial Turf Pitch for Football.  
2284m<sup>2</sup>.

Certified to EN 15330-1.

Removal of existing surfacing and  
shock pads.

Installation of new in-situ bound shock  
pad systems.







# St Bartholomew's School

Sand-dressed Artificial Turf Pitch for Hockey and Football  
Tarmacadam Multi-use Games Area

Working closely with main contractor Willmott Dixon, S&C Slatter were required to build a sand-dressed artificial turf pitch for hockey and football, complying with FIH National Performance Standard, with an adjacent tarmacadam multi-use games area for netball and tennis.

For the hockey and football pitch, a high performance 18mm sand-dressed monofilament artificial turf playing surface, with an in-situ bound rubber performance layer, was installed over a tarmacadam engineered sub-base. In addition to the provision of a rigid panel perimeter sports fence, the new facility called for a special heavy duty acoustic fencing system to be included within the scheme.

The project was successfully completed to a very tight time schedule, where speed of construction had to be supported by care and efficiency in dealing with the logistical and planning challenges presented by the brief.



Client St Bartholomew's School

Facility Sand-dressed Artificial Turf Pitch for Hockey and Football. 6426m<sup>2</sup>.

Tarmacadam Multi-use Games Area. 2769m<sup>2</sup>.

Artificial Turf Pitch to FIH National Performance Standard for Hockey.

Floodlighting system installed to stringent flood spill performance standards.

Acoustic fencing to the Artificial Turf Pitch and Multi-use Games facility perimeter.







“ S&C Slatter delivered on what they said they would do. They were hard working and impeccable in their approach; they worked with us at every step of the way.”

**Luke Brindley**, Building Manager, Wilmott Dixon



# South Bromsgrove High

## 3G Artificial Turf Pitch for Football

In its last Ofsted Inspection, South Bromsgrove High was graded as outstanding in all areas - achievement, quality of teaching, leadership, behaviour and overall effectiveness. Sport is an important part of School life and the school produces, supported by clubs, many county, regional and national performers across a range of sports.

Their new 3G Football Turf facility, also intended for local community use, includes self-contained changing accommodation adjacent to the 106m x 70m pitch which is designed for full size, 9, 7 and 5 a side play.

FieldTurf XM6 60-13 artificial turf was selected as the playing surface system; installed over a high performance engineered base complete with lateral drainage system. Goal and dividing net recesses are built into the layout with spectator hard-standing, and pathways for general and maintenance access. The pitch is floodlit with twin bar rigid panel fencing around the perimeter.

The project was supported by funding from The Football Foundation.



Client South Bromsgrove High

Facility 3G Artificial Turf Pitch for Football.  
7420m<sup>2</sup>.

FIFA 1-Star Performance Standard.


New build engineered sub-base construction complete with lateral drainage system, fencing, floodlighting, spectator area and pathways.

Fully serviced modular self-contained changing accommodation.

Timber retaining wall structure on one side with profiled landscaping and planting on two sides.







“ The new 3G AstroTurf Pitch has been installed professionally and efficiently by S&C Slatter to the highest FIFA 1\* Standard. The students at South Bromsgrove ‘love’ the facility and the quality of football at all levels of ability has improved in such a short time. This is a fantastic facility for both the school and wider community.”

**Dave Bayliss**, 3G ATP Project Manager



“ A really big thank you for the management of the project. Your team leader in particular has been brilliant and the works really have caused a minimum of disruption to us as a school and community site.”

**Chris Loveday**, Director of Community Site & Facilities, Swanmore College





# Swanmore College

## 3G Artificial Turf Pitch and Natural Turf Rugby Pitch

Swanmore College is a popular and successful school in Hampshire which supports the local community through its sports facilities.

The project featured a high quality 3G artificial turf pitch built on a specially created plateau with landscaped bund using surplus material generated by the pitch works. An engineered tarmacadam sub-base structure included a lateral pipe drainage system feeding to a swale balancing pond also specified by the contract.

The playing surfacing system comprised a 42mm pile length 3G artificial turf installed over an in-situ bound rubber performance layer. Permanent line markings were included for one full size football pitch and three cross court football pitches.

A 4.5m perimeter fence using heavy-duty rigid weld mesh panels was installed together with a floodlighting system based on 8 no. 15m high raise and lower columns.

A full size new build natural turf pitch was constructed on the same site as part of the contract works. The new natural turf pitch was designed to support the delivery of good quality rugby.

Client Swanmore College

Facility 3G Artificial Turf Pitch for Football and Hockey, 7526m<sup>2</sup>.

FIFA 1 Star Performance.

A challenging civil engineering project with major landscaping and drainage works, new access routes and ancillary facilities.



SWANMORE  
COLLEGE  
Centre of Excellence







“ The new outdoor development delivered by S&C Slatter has had a huge positive impact on student life at Royal Holloway. Feedback has been overwhelming on the standard and quality of the playing surfaces. We’ve had visitors from all over the country to view the facilities and workmanship that went into it. We have been very happy working with S&C Slatter and would consider our relationship as a partnership rather than client/contractor.”

**Mark Hyndman**, Associate Director - Student Engagement and Sport,  
Royal Holloway University of London



# Royal Holloway University of London

3G Artificial Turf Pitch for Football & Rugby

Sand-dressed Artificial Turf Pitch for Hockey & Lacrosse

Tennis and Netball Courts

Multi-use Games Area

Royal Holloway University of London has a strong commitment to sport from encouraging recreational sport and keeping fit to supporting world-class athletes. There are some 60 sports clubs for students to join, ranging from football to lacrosse to ninjutsu and ultimate frisbee.

S&C Slatter was selected to deliver an outstanding new build development of the sports centre facilities, constructing state of the art artificial turf pitches for football & rugby and hockey & lacrosse, together with tarmacadam tennis/netball courts and a multi-use games area.

The combined full size football and rugby pitch features a high technology 3G artificial turf system while the hockey & lacrosse pitch uses a sand-dressed texturised monofilament artificial turf. In both cases the playing surface was installed over a specially designed in-situ bound performance layer, and the sand dressed pitch also incorporates a tarmacadam engineered sub-base.



Client Royal Holloway University of London

Facility 3G Artificial Turf Pitch for Football and Rugby. 8880m<sup>2</sup>.

Sand-dressed Artificial Turf Pitch for Hockey and Lacrosse. 6233m<sup>2</sup>.

Tarmacadam Tennis & Netball Courts. 2456m<sup>2</sup>.

Tarmacadam Multi-use Games Area. 477m<sup>2</sup>.

Artificial Turf Pitch certified to FIFA 1 & 2 Star and World Rugby Regulation 22 Performance Standards.

Artificial Turf Pitch certified to FIH National Performance Standard.

Perimeter fencing and floodlighting systems installed for all the new facilities.

New natural turf cricket square also constructed as part of the project.





# University of Kent

## 3G Artificial Turf Pitch for Football, Rugby and American Football

As part of an on-going programme of expanding its sports facilities, the University of Kent commissioned S&C Slatter to build a truly exceptional new 3G artificial turf sports pitch. Situated at the University's outdoor facilities complex on campus, the 127m x 80m pitch provides students with even more opportunity to participate in sport.

The design specification enables back-to-back fixtures and training for rugby, football and American football; delivering optimal playing conditions for matches from recreational play to top level rugby and football. The pitch is certified to FIFA 1 Star, World Rugby Regulation 22 and IATS performance standards.

The 3G artificial turf selected for this project was the high-performance 60mm Vertex RGF, developed by FieldTurf, the World's leading producer of artificial turf, and our manufacturing partner.

Floodlighting, fencing, spectator hard standing and access paths are all elements of the overall scheme provided by S&C Slatter.



Client University of Kent

Facility 3G Artificial Turf Pitch for Football, Rugby and American Football. 10160m<sup>2</sup>.

FIFA 1-Star Performance Standard.

World Rugby Regulation 22 Performance Standard.

IATS Performance Standard.

High performance FieldTurf Vertex 3G artificial turf with in-situ bound rubber shock pad.

Base construction with Soil Stabilisation Technology (SST) and lateral, perforated pipe drainage system.

Floodlighting, perimeter fencing, spectator hardstandings and access pathways.







“ This latest addition to our portfolio of facilities is superb. From start to finish, S&C Slatter have been a pleasure to work with and dealt with every unseen challenge swiftly and efficiently, making my life a great deal easier. We have already had a plethora of internal and external groups using the facilities, including sport groups from American universities/academies who said ‘it was the best pitch they had ever played on’. Testimony to the the quality of FieldTurf Vertex as a product, and the company that installed it. I genuinely believe we have the ‘Rolls Royce’ of pitches, and couldn’t be happier.”

**Graham Holmes**, Director of Sport, Physical Activity and Recreation, University of Kent





Stephen's Yard  
 Enborne  
 Newbury  
 Berkshire  
 RG20 0HA

T 01635 345210  
 E [info@sandcslatter.com](mailto:info@sandcslatter.com)  
[www.sandcslatter.com](http://www.sandcslatter.com)



Certificate No. 11662

