



**S&C SLATTER**

CONSTRUCTED WITH INTEGRITY



CONSTRUCTED

WITH INTEGRITY



# WELCOME

S&C Slatter are experts in the design, construction and maintenance of sports facilities for grassroots to elite level performance

Established in 1991, we work across the sports, education, leisure and business sectors to deliver outstanding results with minimum disruption and maximum value.

Our dedicated in-house experts cover design, planning, finance, construction, and maintenance, taking your project from concept to completion.



**Benedict O'Connor**  
**MANAGING DIRECTOR**

In 2020, Ben was appointed Managing Director, overseeing the day to day running of the business. Ben's experience includes the delivery of major projects such as Olympic and Commonwealth Games facilities.



**David Slatter**  
**CHIEF EXECUTIVE OFFICER**

Responsible for the strategic direction of The Slatter Group, David works with the team to ensure that works are delivered in an efficient, safe, and environmentally friendly manner and that we act with the integrity we pride ourselves on.



**Jason Douglass**  
**GROUP DIRECTOR**

Jason oversees the business' commercial strategy, utilising over 25 years' experience in the industry to develop the best value facilities with clients, with a focus on innovation, product development and environmental systems.

# ACCREDITATIONS



# CONTENTS

## ABOUT US

Heritage	/6
Project Delivery	/8

## SERVICES

Sports Pitches	/12
Athletics Tracks	/20
Sports Courts	/22
Turf Types	/26
Design & Planning	/28
Surfacing & Civils	/30
Sports Hubs & Infrastructure	/32
Finance	/36
Partners	/38
Environmental	/40

Clients	/42
Contact Us	/46



# HERITAGE

1991

In April 1991 S&C Slatter was founded by Stephen & Caroline as a partnership company delivering grounds maintenance, cricket and play facilities.

2000s

The start of the 2000s saw all three of Stephen's sons joining the family business. Aged just 20, current CEO David Slatter took up the mantle as the new Managing Director of S&C Slatter in 2003. Under David's leadership, the company branched out into the construction of larger sports facilities, such as full-sized hockey pitches and, towards the end of the decade, third-generation (3G) pitches for football and rugby. As the company continued to grow in size, with our first Contracts Managers and multi-pitch projects, S&C Slatter transitioned from a partnership into a limited company in 2008.

1990

2000

FAMILY RUN



The Slatter family heritage in sporting excellence spans further back than the formation of S&C Slatter, with current CEO David Slatter's grandfather, William Slatter, responsible for the construction and maintenance of the Berkshire County Cricket Club Grounds, located at St. Bartholomew's School, Newbury. His son Stephen, the co-founder of S&C Slatter, would go on to look after the very same cricket facility at the school. 20 years later, his son David delivered the school's first artificial turf pitch - a full-sized pitch for football and lacrosse - as well as four tennis and netball courts. These facilities are still maintained by S&C Slatter more than 10 years after they were constructed! This is not an unusual story at the company, where we have proudly served a high number of repeat customers over our 30 year history.

## NEXT GEN

As technology and artificial turf innovations developed, so did S&C Slatter. In September 2010, the company was selected for the [inaugural Football Foundation AGP](#) (artificial grass pitch) Framework: the FA, Premier League and Government's grassroots football initiative, which develops artificial turf pitches for communities across the country. S&C Slatter has successfully been reselected for the framework in each successive cycle and continues to deliver first-class 3G pitches on behalf of the framework across the country.

2010

## 2010S

The 2010s saw a period of rapid growth for the company, with the formation of new in-house divisions encompassing [Maintenance, Design & Planning, Surfacing & Civils](#). In 2014, we began our exclusive artificial turf partnership with [FieldTurf](#), the first of our longstanding partnerships with Tarkett Sports. In 2016, we became the [world's first](#), and now longest serving, [International Hockey Federation \(FIH\) Certified Field Builder](#). We rounded off the decade with our largest project to date, a [£4.3m sports hub project](#), and the acquisition of our sister company [White Horse Contractors](#).

## 2020S

S&C Slatter has continued to enjoy substantial growth at the turn of the new decade. Announcing a new partnership with world-leading athletics track manufacturer [Beynon Sports](#), we began work on [Birmingham's Alexander Stadium redevelopment](#) in late 2020. To further support our customers, we entered into an exclusive partnership with Buckingham Leasing to offer [competitive finance solutions](#) for sports facilities. In April 2021, we proudly celebrated [30 years of excellence](#) in business.

2020

2022

## TODAY

Building on our traditions of expertise, capability and service we continue to invest in new technologies and key relationships. Our latest [partnerships with the NPL and PADSIS](#) further our commitment to support clubs and schools to develop first-class sporting facilities. We're helping to create business parks of the future, as with our [SAPCA Award Winning project](#) at Winnersh Triangle. We continue to monitor the industry and offer clients up-and-coming sports such as [padel](#), as well as [new initiatives to support sustainability](#) in sports construction and manufacturing.

# PROJECT DELIVERY

S&C Slatter's 'Concept to Completion' process mirrors the RIBA Plan of Work framework.

As experienced contractors we know that every project is unique, so while this framework is in place, we'll never come to you with a one-size-fits-all solution.

Instead, we'll bring you our experience, expertise, and a commitment to work collaboratively to explore what you want and to identify how this can be delivered effectively, efficiently, and safely.







## DEFINITION & BRIEF

The first stage begins when the need for your project is identified. This might be an early idea, a fully formed brief or somewhere in between. We'll meet with you to conduct a site visit, to better understand the proposed space for your facility and consider any existing infrastructure that could be factored into your finalised brief and project costs.

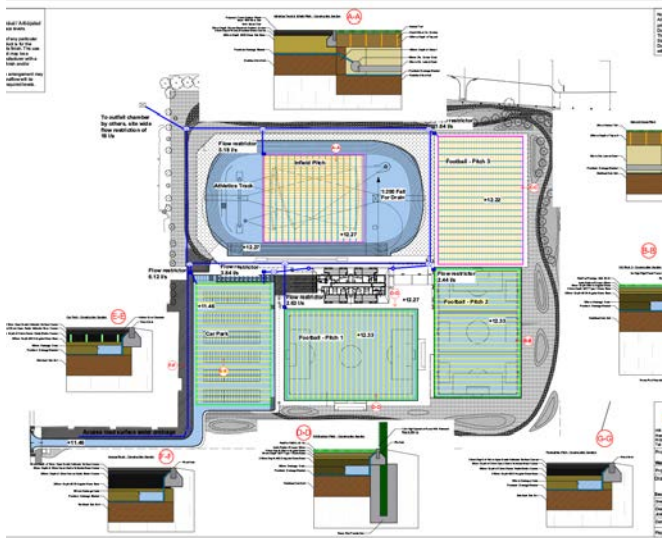
Together we will explore your motivations and ambitions and identify any specific aspirations, objectives, and requirements. Our discussion will also cover any feasibility issues, planning considerations, technical requirements, and parameters such as timescales and budget.



## DESIGN & PLANNING

With your detailed brief identified, it's time to cement your project vision through the creation of conceptual designs. The design proposal will also outline our construction specifications and include estimated costs and timescales to allow further discussion and amendments to formulate the final project brief, ahead of the crucial planning stage.

Our planning experts can lead and manage all aspects of your Planning Application process to save you time and inconvenience, or work within your own established team to provide specialist guidance.



## TECHNICAL DESIGN

As with all projects, ensuring that the technical design is thorough and well informed will greatly minimise risk during the most expensive phase of your project, the construction phase. This is where your design becomes informed and specific, addressing and anticipating issues, while incorporating all of the chosen materials and elements of your project.

These drawings will include every element that will be delivered during the construction phase, from levels and drainage to line-marking and floodlighting, setting out and as built.



## CONSTRUCTION

The construction process encompasses both offsite manufacturing (e.g. of your selected synthetic surface) and on-site works, from initial preparation and ground excavation all the way to finishing touches such as equipment, fencing and floodlight installation.

Your holistic construction plan will detail exactly how the contract will be realised, delivered by an experienced management team specifically selected for your project to ensure a safe, collaborative and communicative environment.



## HANDOVER & SUPPORT

Once construction work has concluded, your facility will be handed over into your ownership and we will provide support to ensure your facility is appropriately cared for to maximise its lifespan and performance. It's important for any sports facility to receive regular and sufficient maintenance, not only to protect the performance and longevity of your new facility, but to satisfy any warranties or guarantees in place.

With a dedicated in-house sports maintenance division, we can either provide your grounds team with specialist training and equipment, or put together a bespoke maintenance programme, delivering expert care on a schedule convenient for you.

## PRIVACY AND CONFIDENTIALITY

We regularly work for elite sports clubs, schools and private individuals. Our staff understand the importance of personal privacy, safeguarding, and security. We respect client confidence and will work with you to develop a plan of works that accommodates your requirements.

## SAFETY AND ENVIRONMENT

Mitigating environmental impact is a core value of S&C Slatter. We are proud to work closely with clients as well as our partners and supply chain to provide environmental solutions.

## ACCREDITATION

We are recognised, accredited, and certified by key governing and advisory bodies for your peace of mind. These encompass quality management, supply chain, procurement, and risk management systems.



# FOOTBALL PITCHES

# FOOTBALL

We deliver artificial, natural and hybrid turf football pitches from grassroots to the highest levels of football

## ARTIFICIAL

As the leading 3G stadia pitch builder - and one of the only suppliers to have been selected for all three cycles of the Football Foundation AGP Framework - we have decades of experience in delivering first-class 3G pitches to FIFA Quality Pro and FIFA Quality standards, partnering exclusively with FIFA Preferred Turf Producer, FieldTurf.

## NATURAL & HYBRID

With over 90 years' combined expertise across S&C Slatter and our sister company, White Horse Contractors, we combine our substantial heritage in sports construction and land drainage with the very latest technologies to deliver cutting-edge hybrid turf and natural turf pitches. From small community facilities to stadia and elite multi-pitch training grounds, we pride ourselves on delivering for clubs at every stage of the game.

## SERVICES

- » Pitch design and planning
- » Specialist pitch drainage
- » Bulk earthmoving and construction
- » FieldTurf artificial turf installation
- » GrassMaster and PlayMaster Hybrid turf installation with the latest machinery
- » Cultivation and seeding
- » Bespoke seed blends and specialist irrigation
- » Renovation, refurbishment and maintenance



“With artificial pitches, you get what you pay for, so we’ve gone for the best. We’re using the same company we used at Sutton United, S&C Slatter. They are the best quality firm around.”

**PAUL DOSWELL, MANAGER, HAVANT & WATERLOOVILLE FC (FORMER MANAGER SUTTON UNITED)**



# HOCKEY PITCHES



# HOCKEY

**As the first, and longest-serving, FIH Certified Field Builders, we are the UK's recognised leaders in hockey pitch construction**

Our team is highly experienced in the design, construction and maintenance of sand-dressed, water-based and sand-filled artificial turf hockey pitches.

We've built the highest number of International Hockey Federation (FIH) Global Elite hockey pitches in Great Britain and are the premier choice for the education sector.

Working closely with our clients, we design and construct hockey pitches that best fit your budgetary requirements, FIH performance level and sporting or revenue ambitions.

We partner exclusively with FIH Preferred Turf Producer FieldTurf for their superior artificial turf systems. Only fields constructed with FIH Preferred Suppliers are eligible to be tested to become FIH Certified Fields.



# RUGBY PITCHES



# RUGBY

We design and build safe, durable and high performing rugby pitches for community use right through to Championship and Premiership level Rugby

Working exclusively with World Rugby Preferred Turf Producers FieldTurf, we've produced numerous 3G artificial turf rugby pitches to World Rugby Regulation 22 performance standard for schools, sports hubs and top-tier rugby clubs.

As well as advanced artificial turf systems, we offer hybrid and natural turf pitch options utilising the latest innovations in technology and construction methodology.

With our dedicated in-house design and planning teams, we will deliver your new rugby pitch, refurbishment or renovation to a specification that best suits your needs and objectives.

Clients include Coventry Rugby Club, Shrewsbury House School and Colchester Northern Gateway sports hub.



"We chose to work with S&C Slatter as they have worked with various clients (private and public sector) all around the UK. We knew their experience would very much help Colchester Borough Council deliver a state-of-the-art sports facility."

**JACK CONINGTON, COLCHESTER BOROUGH COUNCIL**

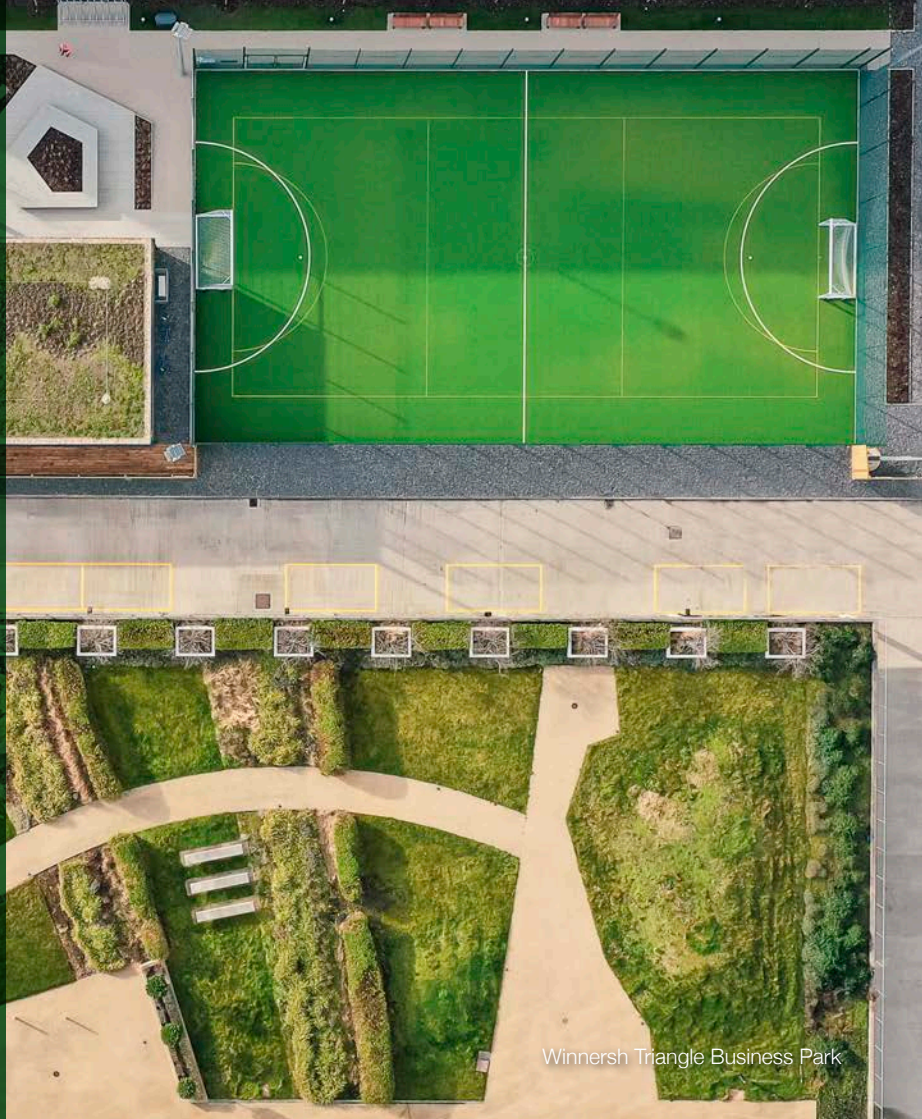
# MULTI-USE GAMES AREAS (MUGAS)

We believe lack of space shouldn't be a barrier to top quality sports facilities

Delivering more than 200 artificial turf, polymeric and macadam multi-use games areas over the years, we specialise in maximising underutilised space for sport.

From old site compounds to unused banks of grass, you'll be surprised to discover how small areas of land can be transformed to offer a multitude of sports.

Working with you to understand the variety of sports you'd like to offer, we'll design and build a MUGA with a surface that best suits your primary sport while allowing for the play or training of secondary sports - all in one space.



Winnersh Triangle Business Park

## GEN 2

**Our Gen 2 pitches deliver a multi-sports solution that ticks the box for a variety of sports governing bodies**

Gen 2 is a sustainable multi-sport surface developed by the FIH in partnership with England Hockey, England Netball and the LTA, and endorsed by the EHF, ITF and Sport England.

Created specifically to increase the sporting opportunities delivered by short-pile artificial turf, Gen 2 is an innovative surface that supports the play of hockey, netball, tennis, small-sided football, futsal, lacrosse and more.

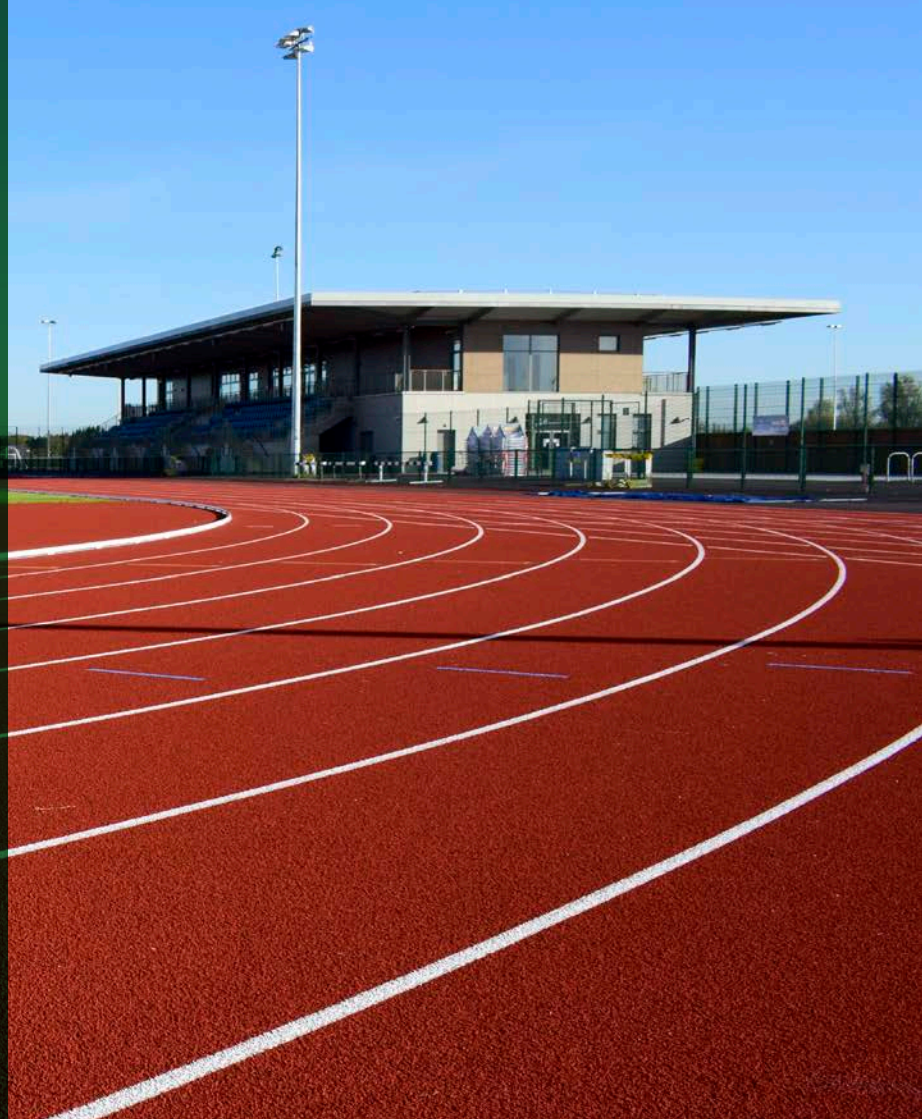
Perfect for schools looking to offer a multitude of sports in once space, or leisure centres looking to maximise revenue potential, Gen 2 is becoming a fast favourite for many clients.

# ATHLETICS

Working with clients at a community, national and global level, we build everything from small field event facilities to World Athletics Class I athletics tracks

Working closely with our exclusive partners, world-leading athletics track manufacturers Beynon Sports, we design, construct and maintain athletics tracks, infields and associated facilities.

Whether an 8-lane full PU solid track system for elite global competition, or a 2-lane polymeric track for school sports, we work with you based on your needs, limitations and requirements.





# MAINTENANCE

S&C Slatter are recognised leaders in sports facility maintenance. Our highly trained operatives provide expert care for artificial turf pitches, playing courts and tracks at over 600 sites across the UK

We utilise the latest technologies and techniques to maximise the performance, safety and lifespan of sports pitches, athletics tracks and playing courts.

Whether natural turf, tarmacadam, polymeric or artificial, all sports surfaces require maintenance to ensure that they're safe, long-lasting and performing to a quality standard.

We can deliver your full maintenance programme or train your in-house teams.

# TENNIS & NETBALL

We deliver tennis and netball court construction utilising a variety of surfaces, chosen to suit your specific requirements

Whether macadam, polymeric, sand-dressed or Gen 2, your playing court will be designed to meet your brief specification and objectives.

We've worked with a number of clients who have made the move to co-educational learning and seek to improve their existing facilities to accommodate new students.

This may be achieved through the refurbishment of existing courts for multi-use provision, or the construction of new courts altogether. Our design experts will guide you on the best possible solution for your needs.





## PADEL

**We work with trusted partners to deliver stunning, high quality, UK-manufactured padel courts for the world's fastest growing sport**

We combine heritage with innovation to deliver top performing, safe and durable padel courts designed for your performance and budgetary needs.

Sociable, fun and easy to play, padel has been integrated into the LTA, who recognise the potential of the fast-growing sport – both as a standalone sport and as a way to attract and retain more members to tennis clubs.

25% smaller than a traditional tennis courts, less space is required for construction, meaning padel courts are a great way to maximise under-utilised areas for sport.







CONSTRUCTED

WITH

INTEGRITY

# TURF TYPES

When it comes to constructing a sports pitch, there are a variety of surface options to choose from.

With each turf type delivering top-flight performance standards, the key differences lie in the durability, lifespan, revenue potential and the weekly hours of usage available.

Some sports, such as Hockey, are only played on one type of turf (artificial) where others (such as football and rugby) can be played on various turf types.



## 3G ARTIFICIAL TURF

3G or '3rd generation' artificial turf pitches are pitches designed to replicate the performance of a high-quality natural grass pitch. Primarily used for football and rugby, 3G artificial turf systems use a combined sand and performance infill, and have a longer pile height, usually between 40-60mm. Third generation technology is approved for use by FIFA, World Rugby, The FA, RFU and RFL.

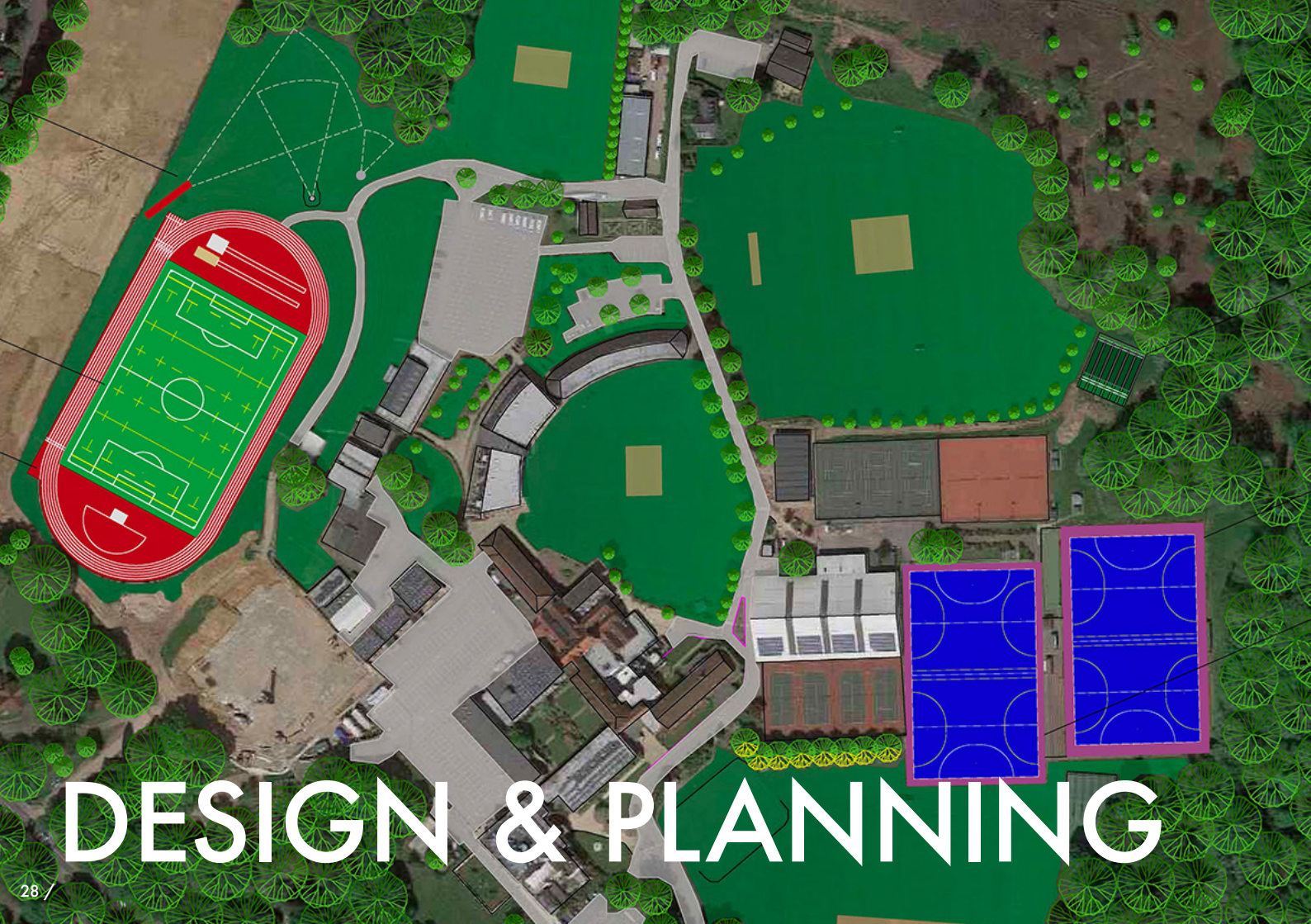
## SAND-DRESSED TURF

Sand-dressed turf is the most common turf system used for hockey pitches around the world. A step below water-based pitches (reserved for elite international performance), sand-dressed pitches are used for lower level national, regional and club hockey and are capable of achieving the FIH National performance standard. The turf system features a shorter pile length and more densely packed fibres than a 3G pitch. As the name suggests, sand is the only infill used to partially support the synthetic fibres.

## GEN 2 TURF

Gen 2 pitches were developed when sports governing bodies from across the world joined forces to create an innovative new playing surface that can be used for hockey, netball, tennis, small-sided football, futsal, lacrosse and more. Sand-dressed synthetic turf (above) is commonly used in the construction of Gen 2 pitches, with a more tennis-focused alternative being a textile surface manufactured with a needle-punch technique, partially supported by sand.





# DESIGN & PLANNING

## S&C Slatter have a highly skilled, in-house, sports facility design and planning team, providing a seamless experience from concept to completion

Our dedicated designers will work closely with you to develop conceptual designs, transforming these into detailed and informed technical drawings, ready for planning and construction.

Taking your finalised sports facility design through planning, we can either deliver specialist advice within your own planning team or assume lead responsibility for the planning process in its entirety.

We'll handle everything, from the production of the pre-application planning statement to the completion and submission of statutory planning documents.

As sports construction specialists, we are perfectly placed to deliver the design and planning stage of your project, leveraging decades of field-based experience to minimise your exposure to risk and maximise efficiency through the construction phase.

## SERVICES

- » Conceptual designs
- » Fly throughs and visualisations
- » Site surveys and evaluation
- » Design development
- » Pre-application planning statements
- » Planning process management
- » Statutory planning documents
- » Project build plans
- » Evidential reports
- » Project narratives
- » Attendance at relevant meetings and interviews





# SURFACING & CIVILS

## Our in-house surfacing and civils team are highly experienced in the design and construction of effective car parks, roadways and pedestrian access routes

As well as providing support to our sports construction projects, our surfacing and civils division deliver major standalone surfacing and infrastructure solutions for business parks, schools, local authorities and private estates.

We offer a variety of surfacing options, including tarmacadam, resin-bound, gravel and stone, as well as supporting works. This includes the design and installation of lighting, fencing, street furniture and landscaping.

In addition to new build projects, our team work closely with clients looking to rectify any health and safety hazards at their existing facilities.

Our team will rectify damaged or aging infrastructure and deliver repairs or resurfacing to provide a safe and long-lasting facility.

## SERVICES

- » Effective layout design
- » Car park construction
- » Roadway construction
- » Pedestrian access routes
- » Lighting and fencing
- » Street furniture and landscaping
- » Resurfacing and repairs

“The residents love the new road and have expressed how courteous the S&C Slatter team were throughout the whole process. Many of the team were on first name terms with the residents by the end of the week. We set the specification with Simon and it was met and in areas exceeded.”

**REGINALD MARSH,  
HYTHE END RESIDENTS  
ASSOCIATION**





# SPORTS HUBS



# SPORTS HUBS

With a highly skilled workforce and wide ranging in-house service offering, S&C Slatter are experienced in delivering large scale sports hub construction projects

We work closely with a range of partners and stakeholders - independent schools, local authorities, housing developers, professional and amateur sports clubs. We collaborate at every level, providing a seamless transition through every stage of the process.

Working with world-leading sports surface manufacturers, we deliver facilities certified to various international standards, whether it be FIFA Quality Pro, World Rugby Regulation 22, FIH Global Elite, World Athletics or FA National Ground Grading.

Our in-house teams can take care of all aspects of your sports hub construction or refurbishment, from design and planning through to construction, access roads, car parks and additional infrastructure.

## SERVICES

- » Design & planning
- » Sports pitches
- » Playing courts
- » Pavilions & clubhouses
- » Access routes
- » Car parks
- » Spectator stands
- » Fencing, floodlighting & sports equipment

“S&C Slatter co-ordinated and worked well with both the Council’s asset management team and the Xcel Sports Hub’s principle contractor. They worked hard to fully address our requirements and were proactive throughout the project.”

**SIMON MORRIS,**  
**ELMBRIDGE COUNCIL**



Colchester Northern Gateway Sports Park

# SPORTS BUILDINGS

We are experienced in building clubhouses, pavilions, spectator seating, and changing facilities for schools, sports clubs, and local authorities

Whether you're looking to create a community hub with the addition of a new clubhouse, need custom team shelters for your new pitch or simply require storage, we can deliver a variety of sports buildings in support of your new facility.

Aside from the economical side of working with one contractor to deliver both the major and supporting elements of a new sports construction project, clients benefit from our highly experienced, collaborative and expert team from start to finish.



# ANCILLARY WORKS

We don't just deliver your new pitch or court, we can take care of every aspect of your new facility

Our team are highly effective in designing and constructing first-class sports facilities, inclusive of any fencing, floodlighting and equipment to suit your requirements.

Whether specified by budget or sports governing guidance, we'll work with you to select and install systems to enhance your new facility.

## SERVICES

- » Fencing and floodlighting
- » Sports equipment (goals, nets, posts)
- » Hardstandings & access routes

**Please DO NOT**

- Smoke on the pitch
- Eat on the pitch
- Drop litter
- Chew gum on the pitch
- Allow dogs or bikes on the pitch
- Allow spectators on the pitch
- Drag goals or heavy items across the surface

Sports Facility  
Constructed By

**S & C SLATTER**  
SPECIALISTS IN THE DESIGN & CONSTRUCTION  
OF SPORTS GRASSES & EDUCATION

Call 01225 345271 | sandcslatter.com

**Please DO**

- Wear clean sports shoes
- Keep drinks in plastic containers only
- Keep our face free from debris
- Close all gates during play
- Report any damage immediately to booking office
- Ensure goals and posts are secure before playing
- Enjoy

ACCEPTABLE FOOTWEAR FOR SANDED / SEMI-SANDED INFILL FIELD

NO X	NO X	YES ✓	NO X	YES ✓
Studs (prohibited)	Plastic Studs / Screw In (bore in less than 15mm)	Multi Studs	Blades or Boots with metal or metal tipped studs	Flat Soled eg. Trainers etc.
				

Please make sure your boots are clean before going onto the pitch. Anyone with inappropriate footwear will be asked to leave the pitch as it damages the playing surface.

Thank You.



# FINANCE

## Through our exclusive partnership with Buckingham Leasing, we can provide competitive funding solutions (subject to approval) for your new sports facility

Buckingham Leasing have over 18 years' experience in delivering flexible and competitive financial solutions, with proven expertise in the grounds care, sport and leisure sectors.

As well as providing finance from their own fund base, over the last twenty years they have developed additional relationships with some of the largest lending institutions in the UK.

Together we can provide competitive funding solutions (subject to approval) for your new sports facility via three finance options:

- » Operating Lease
- » Hire Purchase Agreement
- » Finance Lease

Offering market leading rates and working closely with S&C Slatter to understand your project, Buckingham Finance can offer bespoke finance packages from £1,000 to £10,000,000.

## WHAT FACILITIES CAN YOU FINANCE?

- » Artificial turf pitches (including fencing, floodlighting and maintenance)
- » Hybrid turf pitches (including fencing, floodlighting and maintenance)
- » Athletics tracks (including fencing, floodlighting and maintenance)
- » Playing courts + MUGAs
- » Non-turf cricket facilities
- » Natural turf pitches
- » Car parks



*"On balance paying £50-£60k per year on an operating lease represented better value than paying upfront costs of around £270k – £300k...and the income generated from pitch rental offsets the repayment."*

**DAVID MAINE, DIRECTOR OF ESTATES & FACILITIES,  
THE JOHN MADEJSKI ACADEMY**

# PARTNERS

Our reputation for delivering an outstanding end to end service for our clients is realised through a dedication to quality, a determination to achieve objectives, and excellent teamwork.

Our commitment to operating with integrity extends through to the careful selection of dedicated, world-leading partners, with whom we collaborate to create a seamless, extended team of highly effective experts.

**padsis**  
Professional Association of  
Directors of Sport in Independent Schools



**FieldTurf**  
A Tarkett Sports Company

THE ULTIMATE  
SURFACE EXPERIENCE

## ARTIFICIAL TURF

We partner exclusively with cutting-edge artificial turf manufacturers FieldTurf for artificial turf sports pitch construction in England and Wales.

International Hockey Federation (FIH), FIFA and World Rugby Preferred Turf Producers, FieldTurf invented and perfected long-pile, infilled artificial turf which revolutionised sports pitch design and established the company as global leader.

 **BEYNON**<sup>®</sup>  
A Tarkett Sports Company

## ATHLETICS

S&C Slatter partner exclusively with world-leading athletics track manufacturer Beynon Sports for athletics track construction in England and Wales.

With over 7,500 installations in the last 40 years, Beynon Sports is the leading manufacturer of Class I World Athletics Certified Surfaces in the United States.

# GROUP PARTNERS

## WHITE HORSE CONTRACTORS

Since 1957, White Horse Contractors has evolved from its background as an agricultural and land drainage contractor to become a leading provider of specialist design, construction, drainage and maintenance services for the sport, leisure, education, land owner, amenity and environmental sectors.

Acquired by S&C Slatter in 2019, together both companies, operating under The Slatter Group, offer an unrivalled scope of services to a broad reach of clients within the sports grounds, amenity, leisure, agricultural and equestrian sectors.



**WHITE HORSE CONTRACTORS**  
CONSTRUCTED WITH INTEGRITY

## HYBRID TURF

White Horse Contractors' hybrid pitch partnership with GrassMaster Solutions marks the third sports construction partnership between The Slatter Group and Tarkett Sports, part of the €2.3 billion Tarkett Group.

GrassMaster hybrid turf has been installed on over 800 pitches around the world, with UK users including Manchester United, Liverpool FC, Twickenham Stadium and Wembley Stadium.



**GRASSMASTER**  
By Tarkett Sports

THE ULTIMATE  
SURFACE EXPERIENCE

# ENVIRONMENTAL

We work proactively with clients, partners and our supply chain to offer and implement environmental mitigation as part of our project delivery

We've noticed a growing desire for environmental consideration, both from manufacturers and clients, and have been consistently working to promote solutions to mitigate the impact of our work on the environment.

Our mitigation methods, alternative infills, and partner recycling programmes currently tackle the most pressing environmental challenges our industry and clients face. We will continue to monitor new developments and champion eco-friendly design, practice and removal in our work, in collaboration with our partners and governing body advice.





# SURETEC™

**We offer FieldTurf's sustainable recycling technologies exclusively in England and Wales**

SURETEC™ stands for 'Sustainable Recycling Technologies' - FieldTurf's program to participate in and apply plastics recycling technologies, in-house and externally, with the ultimate goal of creating a 'circular turf'.

Currently, under the SURETEC™ program, we are able to offer organisations the option to have their new artificial turf system manufactured with 100% recycled turf fibres.

Through a process of advanced chemical recycling, SURETEC™ fibres are fully ISCC Plus certified, reducing both plastic waste and carbon emissions.

# CLIENTS

Our client base includes independent and academy schools, community and elite sports clubs, main contractors, business parks, local authorities, and government agencies

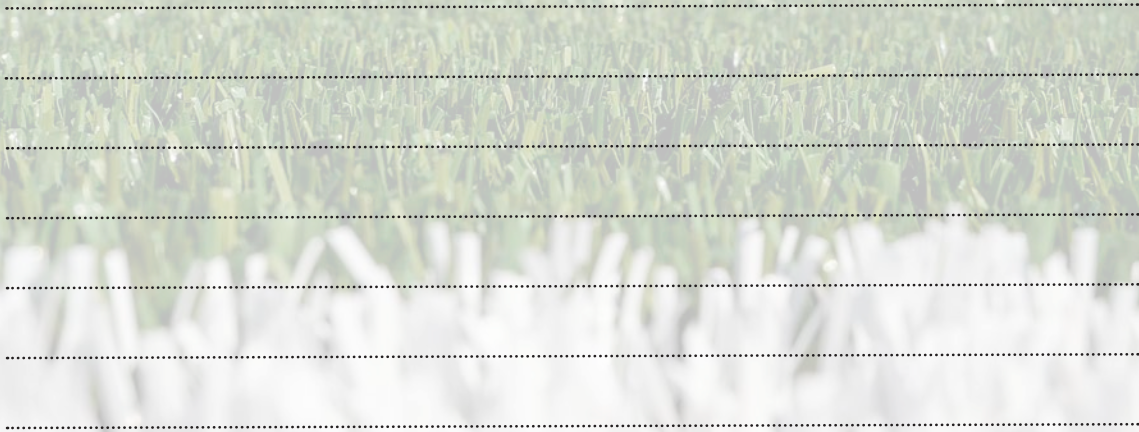
 <p>BERKHAMSTED SCHOOL</p>	<p><b>MORGAN SINDALL</b></p>	 <p>ETON COLLEGE</p>	 <p>UNIVERSITY OF CAMBRIDGE</p>	 <p>freedomleisure where you matter</p>	 <p>Everton 1879 NISI SATIS NISI OPTIMUM</p>
	 <p>FRASERS PROPERTY</p>	 <p>COVENTRY RUGBY</p>	 <p>JOHN MADEJSKI ACADEMY</p>	 <p>Birmingham City Council</p>	 <p>LUPTON UNITED FC</p>
 <p>Haven</p>	 <p>KIER</p>	 <p>HARROWGATE TOWN AFC</p>	 <p>LORD'S</p>	 <p>fusion</p>	 <p>CHARTERHOUSE</p>
<p>ARLINGTON BUSINESS PARK</p>	 <p>ROEDEAN</p>	 <p>Elmbridge Borough Council ...bridging the communities...</p>	 <p>COLCHESTER U.F.C.</p>	 <p>RUISLIP C.C.</p>	 <p>WILLMOTT DIXON SINCE 1852</p>

# OUR FLEET

We maintain a comprehensive fleet of wholly owned and operated specialist plant and machinery, enabling us to overcome any unforeseen challenge or obstacle



# YOUR PROJECT NOTES



A large white rectangular area with horizontal dotted lines for writing notes, overlaid on a background of a soccer field. The background shows a green field with a goalpost in the distance under a clear blue sky.



.....

.....

.....

.....

.....

.....

.....



# CONTACT

We hope that you have enjoyed reading about our services, heritage and expertise

Please get in touch to discuss your project:

**Call:** 01635 34521  
**Email:** [info@sandcslatter.com](mailto:info@sandcslatter.com)  
**Location:** Stephen's Yard, Enborne,  
Newbury, Berkshire, RG20 0HA

---

## FOLLOW US

**LinkedIn:** [/s&c-slatter-limited](#)  
**Twitter:** [@scslatter](#)  
**Facebook:** [/sandcslatter](#)  
**Instagram:** [@scslatter](#)





CONSTRUCTED

WITH

INTEGRITY



[SLATTERSPORTSCONSTRUCTION.COM](http://SLATTERSPORTSCONSTRUCTION.COM)